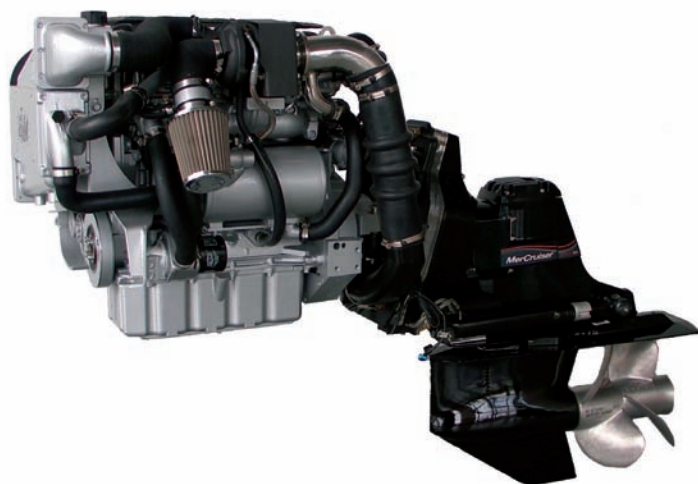




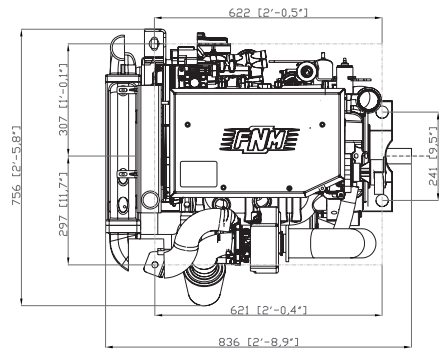
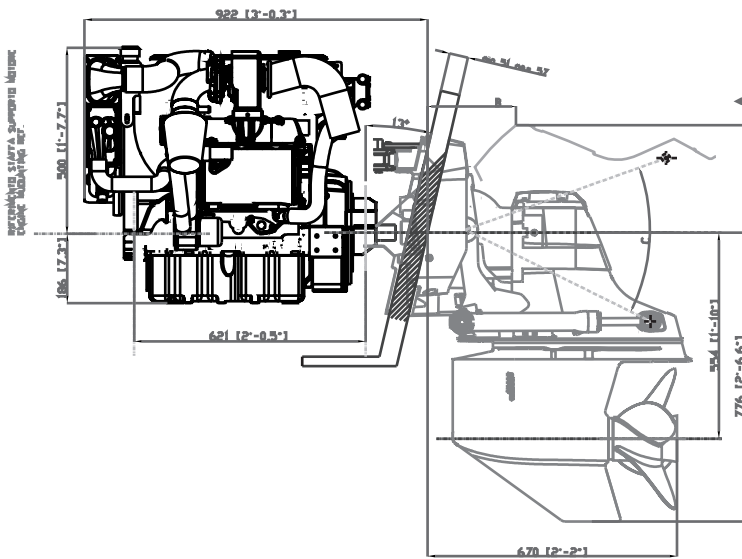
MARINE DIESEL ENGINES



## FNM HPEP 150

Configuration	4-stroke cycle, twin camshaft, 16 V
Maximum output at crankshaft	110 kW/150 hp at 4000 rpm
Maximum output at propeller	103 kW/140 hp at 4000 rpm
Maximum torque	311Nm a 2600 giri/min.
Displacement	1.910 c.c.
Bore x stroke	82 x 90,4 mm
Cylinders	4, in-line
Combustion system	Direct injection Common rail
Aspiration	Supercharged with variable geometry turbo
Starting system	Electric starting 12 V – 2,1 kW
Alternator	14 V – 105 A
Cooling system	Double water cooling system with heat exchanger
Lubrication system	Totally enclosed, forced lubricating system with pump
Max. mounting inclination	14°
Dry weight without stern drive	240 kg
Environmental	RCD 2003/44/CE ed EPA TIER 2
Engine mounting	Rubber type anti-vibration mounting

Power according ISO 8665, tolerance 5%, Diesel fuel according EN 590



Compliant with the RCD 2003/44/CE and EPA TIER 2 emission standards.